

BLACK EAGLE® SAFETY 50 HIGH

Art. No. 620010



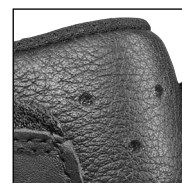
CE EN ISO 20345:2011 S3 HRO HI CI WR SRC

Waterproof leather, waterproof and extremely breathable with GORE-TEX® Extended, leg height 20 cm, antistatic, ESD, sole 019

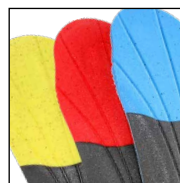
Available sizes UK 3 – 12, Extra large sizes UK 12½ – 15



HAIX® 2-Zone Lacing



HAIX® Climate System



HAIX® Vario Wide Fit System



HAIX® Composite toe cap



HAIX® Smart Lacing



Upper Material

Waterproof, hydrophobic and breathable leather, 1.8 – 2.0 mm thick

Inner Lining

GORE-TEX® Extended; waterproof and highly breathable. Abrasion-resistant lining with optimized climate comfort, especially for flexible alternating inside and outside use and at warmer temperatures.

Insole

Comfortable, well cushioned and moisture-wicking insole. Separate heel section for improved cushioning and enhanced fit. "AIRFLOW" channels help keep the foot cool, plus "Perfect-Fit" marking to ensure correct fit.

HAIX® Anti Slip

Perfect grip on different terrains, due to optimised tread pattern and special rubber compound.

HAIX® Protective sole

Flexible, lightweight and completely metal free puncture resistant midsole.

Sole

Lightweight and athletic sole construction with a high level of slip and abrasion resistance, offering improved heel to toe control in all weather conditions. The lightweight PU cushioned sole provides optimum comfort as well as excellent thermal insulation. The non-marking rubber outsole is also resistant to heat and fuel-oil.

ESD

Electrostatically conductive footwear tested according to DIN EN 61340-4-3:2002.

HAIX® Composite toe cap

Anatomically formed and ultralight protective toe cap made of fiber-reinforced plastic for highest safety requirements.

HAIX® Climate System

The HAIX® Climate system uses the pumping movement, which permits air circulation with every step – warm air is released and fresh air comes in through the vent holes at the top of the boot.

HAIX® Vario Wide Fit System

The width of the shoe can be individually adjusted by 3 different insoles. The shoe is supplied with a red insole (medium). A yellow insole (wide) and blue insole (narrow) can be ordered separately.

HAIX® 2-Zone Lacing

Two Zone Lacing System enables a separate adjustment of the boot to the foot and leg area.

HAIX® Smart Lacing

Smooth and non-pressure adjustment of the boot to the foot, quick lock and lace pocket.

Sun Reflect

Reduces the heating effect of the upper leather by direct sunlight. Sunlight is reflected by the leather, keeping the leather and the feet cooler.

Others

Additional manually applied rubber 'toe-bumper' for improved durability, low weight, closed lacing system, pull on loop

UK	3	3½	4	4½	5	5½	6	6½	7	7½	8	8½	9	9½	10	10½	11	11½	12	12½	13	13½	14	14½	15
EU	35	36	37	37	38	39	39	40	41	41	42	43	43	44	45	45	46	47	47	48	48	49	50	50	51
US	4	4½	5	5½	6	6½	7	7½	8	8½	9	9½	10	10½	11	11½	12	12½	13	13½	14	14½	15	15½	16

HAIX®-Schuhe, Produktions- und Vertriebs GmbH

Auhofstrasse 10, 84048 Mainburg, Germany

T. +49(0)8751/8625-0, F. +49(0)8751/8625-25

info@haix.de, www.haix.com